

Emergency Numbers			Map Ref
Police, Ambulance, Fire		000	
Powercor	Service difficulties	132 412	
Police Station	Martin St	5576 5222	D3
Southern Grampians Shire Council	After hours emergency contact	0418 528 313	
Wannon Water	Customer Service	1300 926 666	
	After Hours/Emergency	1300 926 668	

Southern Grampians Shire Services

Council Business Centre	111 Brown St Hamilton 3300	5573 0444	
Penshurst Transfer Station	Tip Rd Thur & Sun 1pm - 4:45pm		
Home & Community Care Services		5551 8480 or 5551 8481	
Family Day Care		5551 8484	
Maternal & Child Health Services		5551 8488	

Health Services

James Dean Pharmacy	Depot 32 Bell St Limited hours	5576 5213	D3
Hamilton Medical Group Clinic	Cobb St Tue AM, Thur PM	5572 2422	B4
Kolor Lodge Aged Hostel	Watton St	5552 3000	B4
Penshurst & District Health Service	Cobb St	5552 3000	B4

Community Services

Mobile Library		5573 0470	
V-Line Bus Service	Martin St (tickets available onboard)		

Schools

Penshurst Pre-School Centre	76 Watton St	5576 5298	D4
Penshurst Primary School	Ritchie St	5576 5433	D5
St Joseph's School	11 Martin St	5576 5438	D4

Churches

Anglican Church	Cobb St	5576 5414	C4
Catholic Church	Martin St	5576 5244	D4
Tabor Lutheran Church	Tabor Rd	5573 5209	
Uniting Church	Martin St	5576 5520	D4

Community Groups

Advance Penshurst	president@advancepenshurst.com.au		
Historical Society		5571 2145	

Community Groups		Map Ref
Lions Club of Penshurst & District	5576 5002	
Mount Rouse & District Historical Society	5571 2145	

Community Groups

Penshurst Cemetery Trust	5576 5241	
Penshurst News	5576 5276	
Penshurst Memorial Hall	0468 640 900	D3
Penshurst A&P Society	5576 5220	
Penshurst Senior Citizens	5576 5276	E3
Penshurst Swimming Pool	5576 7226	D3
Penshurst Fire Brigade	5576 5581	D3
RSL Penshurst - Sub-Branch	5576 7243	E4

Sporting Clubs

Penshurst & District Racing Club	5571 9546	
Penshurst Football Netball Club	5576 5372	F2
Penshurst Lawn Bowls Club	5576 5473	D3
Penshurst Pony Club	5576 5557	

Businesses

Page Electrical	91A Bell St	5576 5404	D3
Brian Loria Brick & Tile	125 Cox St	0418 501 739	
BurnBrae Tearooms	4977 Hamilton Hwy	5576 5590	
Cafe Bagdad	110 Bell St	0417 125 008	C3
Chris Cook Constructions		0417 100 243	
Cottrill's Plumbing	26 Martin St	5576 5255	D3
Farley's Garage	106 Bell St	0418 508 436	
Glenn Cameron Plumbing	6064 Hamilton Hwy	0409 520 354	
John Cameron Painting		5576 5558	
Kelly's Merchandise	76 Bell St	5576 5549	D3
Mandy's Hair Design	88 Bell St	0417 511 177	D3
Mark Nicholson Excavation		5576 6262	
Page Livestock & General Transport	59 Cox St	0428 528 224	C2
Page Super		5576 5557	E2
Penshurst Hotel	92 Bell St	5576 5252 0418 817 134	D3
Penshurst Licensed Grocer	80 Bell St	5576 7204	D4
Penshurst Newsagency & Takeaway	86 Bell St	5576 5330	D4

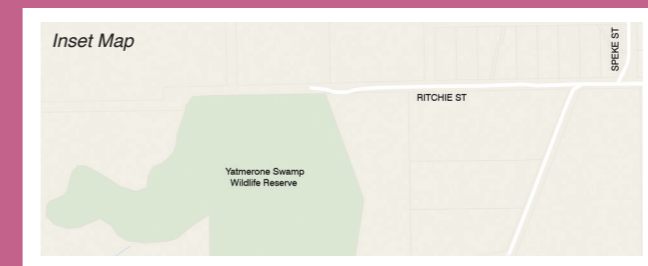
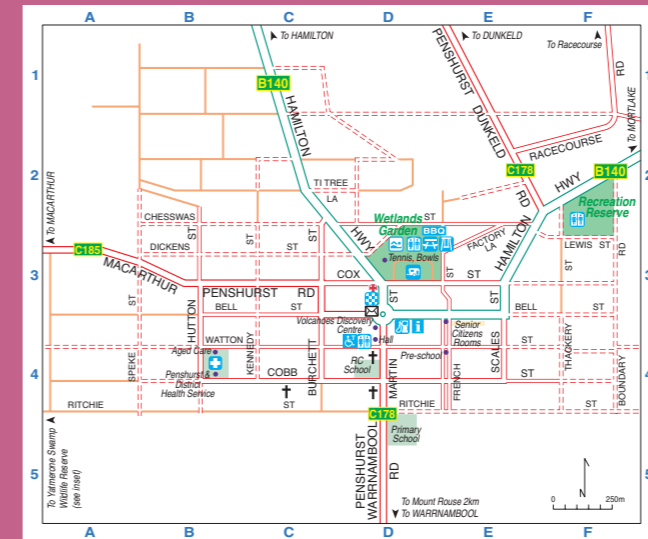
Businesses				Map Ref
Post Office & Gifts	31 Martin St	5576 5220	D3	
R&K Watson Livestock Transport	Hamilton Hwy	5576 5239		
Sparks Agricultural	67 Chesswas St	5576 5583	E2	
Stuart Burger Cartage	Springfield Ln	5576 5516		
Thornton's Engineering	Hamilton Hwy	5576 5383	C2	

Accommodation

Maween of Penshurst	54 Scales Street	5576 7285	E3
Parkview Stays	100 Chesswas St	0418 817 134	D2
Penshurst Caravan Park	Cox St	5576 5220 B/H 9am-5pm	D3

Places Of Interest

Bagdad Produce	110 Bell St	0417 125 008	C3
Boram Boram Cemetery	Boram Boram Ln (off Hamilton Hwy)		
Burger's Museum	Springfield Ln Open by appointment	5576 5236	
Court House	Open first Sat of each month 9.30-12.30 or by appointment	5576 5366	D3
Gaudenzi Wine Bar	100 Bell St	0400 773 264	
Gnadenenthal Cemetery	Days Ln - Settlers were primarily Wendish families from Saxony		
Jean Lee's Art Gallery	112 Chesswas St	5576 5229	C2
Mount Rouse	Panoramic Views of lava plain and the surrounding district. Access by vehicle. BBQ facility and walking tracks.		
Ruins of 'Herrnhut'	Days Ln - Also known as 'Krumnow Ruins'		
Rurik's Shed	36 Martin St Open Friday, Saturday and Sunday	5537 9659	D3
Stonefield Estate Vineyard	899 Stonefield Ln Open by appointment	5576 5378	
Tabor Cemetery	Tabor Rd		
Volcanoes Discovery Centre	23 Martin St Open Friday, Saturday & Sunday and school holidays or by appointment	5576 7233	D3
Wetlands Garden	Chesswas St BBQ Facilities		D3
Yatmerone Wildlife Reserve	Ritchie Street		A4



Southern Grampians Shire Council makes every endeavour to ensure that the details appearing in this publication are correct at the time of printing, but accepts no responsibility for any inaccuracy or mis-description, whether by inclusion or omission. Details appearing within this publication may be subject to change without notice.



Printed using Certified Carbon Neutral paper



Greater Hamilton Visitor Information Centre
Lonsdale Street Hamilton 3300
Freecall 1800 807 056
www.visitpenshurst.com.au



Penshurst



Penshurst

Elm trees grace the verandah-clad main street at the majestic town of Penshurst.

NATURAL WONDERS

The beautiful town of Penshurst nestles beside Mount Rouse, one of the extinct Volcanoes in the region. Home to wallabies, emus, koalas and echidnas, not to mention a multitude of bird life. Penshurst is also blessed with both the 'Never Fail Spring' in the Botanic Wetland Gardens and the Yatmerone Wildlife Reserve.

BLUESTONE HERITAGE

Historic bluestone buildings can be found throughout the town, including the Old Shire Offices that are now home to the Volcanoes Discovery Centre (VDC), and the Penshurst Courthouse, both of which are open to the public. The Courthouse, run by the Mount Rouse and District Historical Society, has an extensive collection of historical records, maps and photographs available for public access.

A walk down the wide tree lined streets, designed for the easy turning of bullock drays, will take you back to the grand old days when a squatter's life was risky and uncertain; where quality building materials were

readily available, and many settlers became as rich as the volcanic soils themselves. Take a leisurely stroll on the historical walk (a booklet is available at the VDC), and view historical buildings where the early settlers left their mark in style, a style that can be easily appreciated today. Such is the quality of the bluestone at Penshurst that the State Parliament and Treasury buildings in Spring Street Melbourne are made from the rock quarried in the area. The rare bluestone dry walls that still exist around Penshurst is another testament to the hard working and patient settlers. The intricate nature of their construction always impresses.

The history of the region dates back well before European settlement when many indigenous groups came to the 'Never Fail Spring' for traditional ceremonies. This was considered 'neutral territory' and a safe gathering place for all. The spring was a central focus when Penshurst became the only Aboriginal Protectorate (1842-1848) in the Hamilton region. After the Protectorate was closed, the land was surveyed and the first blocks were sold in 1851. This was the start of the thriving community that continues today.

ARTISTIC INSPIRATION

Be sure to head up to Mount Rouse where you can ascend to the summit and enjoy the 360 degree view of the region. At sunset or sunrise, romantics are naturally drawn to the top of the Mount, and with good reason, as the first and last rays of the sun show you why Eugene Von Guerard was inspired to paint the Grampians from the top of the Mount. Penshurst was home to painter, mosaic and stained glass artist Mervyn Napier Waller, who went on to create the wondrous Hall of Memory at the Australia War Memorial in Canberra. The crater walk, or the walk across the face of the Mount, will introduce you to the many features of this distinct land form. There are barbeque facilities to enjoy a picnic at the top.

TIME TO DISCOVER

When visiting, allow yourself the time to discover the diversity of Penshurst; mountain walks, eclectic retro vintage wares, historic buildings and award-winning local produce.

To further your knowledge of the mountain and our town, visit the Volcanoes Discovery Centre where you can take a tour and learn more about the volcanic activity and lava flows of Mount Rouse. Stop and chat to the friendly locals, or simply pick up brochures of all the other great activities available in the region.

To truly experience the local charm of Penshurst and its locals, head to the annual Boxing Day races held on the picturesque racecourse – the biggest sporting event of the year for the town.

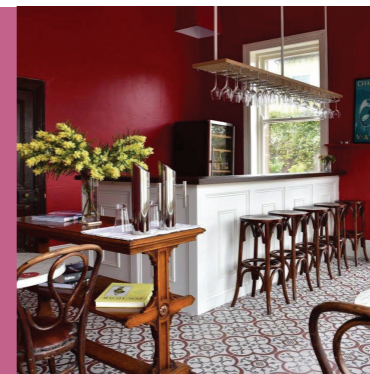
The local Caravan Park is centrally located within walking distance to the wetlands, bowling club, tennis courts, swimming pool and post office. With Penshurst located at the crossroads to many popular tourist attractions, including the Great Ocean Road and the Grampians National Park, it is the perfect place to base yourself when exploring Western Victoria.



Volcanoes Discovery Centre is open Friday, Saturday, Sunday and school holidays 10am-4pm



Experience a sunset from the top of Mt Rouse with 360 degree views



Discover the local charm at the Penshurst Boxing Day races



Noted Australian muralist, painter and mosaicist, Mervyn Napier Waller, was born and raised in Penshurst